



Headteacher: Mrs Katrina Straker, BA English (Hons.) PGCE. NPQH.

## St. Anthony's Catholic Primary School

'Children in our heart, Christ at the centre'  
'We love, we learn and we live'

*Creating kind leaders of the future*

Newsletter Issue 25 - 20 March 2026



### Note from the Headteacher

Dear families

Wow! I cannot thank you enough for the fantastic support you have given to our Big Lent Walk this week. All of the staff at St Anthony's are blown away by the incredible generosity of our families. At the time of writing, we have raised a phenomenal £1,690 for CAFOD, which is more than triple our original target of £500. Our fundraising efforts can pay for enough floating gardens for 7 farmers to feed their family in Bangladesh for a year!



We were blessed with beautiful, warm sunshine for yesterday's Big Lent Walk and thankfully the footpaths in the woods had dried up considerably. The sound of the children's happy, excited voices as they notched up their kilometres was joyful. A big thank you to the parent marshals who supported the walk and helped to keep our children safe. At a time when there are so many worrying events around the world, it is really powerful to see the good that we can do. Thank you for helping our children to learn that when we collaborate and give up our time for others, we can really make a difference!

**Odd Socks Day:** We had fun today wearing colourful or mis-matching socks to celebrate neurodiversity. It was a great opportunity to think about how we are all different. Our Key Stage 2 pupils learnt about some famous people who are neurodivergent so we hope it has been an inspiring day for children too.

**Passion Plays:** I have enjoyed hearing the beautiful singing of our Y3-6 pupils as they have been rehearsing next week's Passion Plays. As we mark the events of Holy Week next week, we look forward to welcoming parents to their performances on Tuesday.

**Palm Procession Mass:** Parent and relatives are very welcome to join our Palm Procession Mass on Friday at 9am. This will be led by Year 1. Please park on Primate Road and sign in at the school office.

**Holiday Clubs:** If any families are in need of childcare during the Easter holidays, please be aware that we have Dodgeball Club running in the first week and Premier Education's holiday club in the second week. Please contact the school office if you need further details.

I hope this glorious spring sunshine lasts into the weekend and allows some of you to enjoy some final Big Lent Walks to add on some extra kilometres.

With best wishes for the weekend, Mrs Straker

### Important Dates:

**Mon 23rd March, 10.30am**  
KS2 Passion Play to parishioners  
Y4 Parents' Evening (rescheduled)

**Tues 24th March, 2.00pm & 6.00pm**  
KS2 Passion Play to parents

**Fri 27th March**  
9.00am Palm Procession Mass led by  
Y1 - all families welcome  
Last Day of Term (usual 3pm finish)

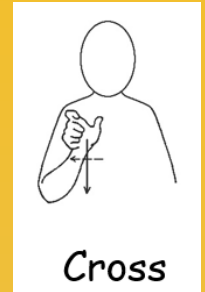
**Mon 30th March - Fri 10th April**  
Easter holidays - school closed

**Mon 13th April**  
Back to school for the Summer Term  
Easter egg hunt with buddy classes

**Fri 17th April**  
'Everest Base Camp' talk to pupils

**Mon 20th - Weds 22nd April**  
Y4 Residential, Stubbington

### Our Sign of the Week:



### Useful emails:

**PSA email address:**  
[stanthonyspsa2025@gmail.com](mailto:stanthonyspsa2025@gmail.com)  
**Guinea Pig waiting list email:**  
[guinea.pigs@saint-anthonysfareham.co.uk](mailto:guinea.pigs@saint-anthonysfareham.co.uk)

### Working together to improve attendance:

#### *Attendance figures for the week commencing 9th March:*

**Whole School** 95.6%

**Year R** 93.3%      **Year 1** 97.3%      **Year 2** 96.3%

**Year 3** 95.6%      **Year 4** 97.0%      **Year 5** 95.9%      **Year 6** 93.9%

An attendance rate of 95% or above is considered good by the DfE.

An attendance rate of 90% or below is categorised as 'persistent absence' by the DfE.



## CLUBS AND SPORTS ACTIVITIES FOR THE WEEK BEGINNING 23/03/2026

DAY	ACTIVITY	TIME	YEAR GROUP	COMMENTS
Monday	French Club	12.30pm - 1.00pm	Yr1 and Yr2	<i>helen@butterflylanguages.co.uk</i>
Monday	Art and Craft Club	3.00pm - 4.00pm	YrR - Yr6	<i>sarah_silvestri@hotmail.co.uk</i>
Monday	Football with CM Sports	3.00pm - 4.15pm	Yr1 - Yr6	<i>info@cm-sports.co.uk</i>
Tuesday	Drama	3.00pm - 5.00pm	YrR - Yr6	<i>superstarsportsuk@gmail.com</i>
Tuesday	Drawing club	3.00pm - 4.15pm	Yr 5 and Yr6 ONLY	<i>FoxArtTeaching@outlook.com</i>
Wednesday	French Club	12.30pm - 1.00 pm	Yr2 - Yr4	<i>helen@butterflylanguages.co.uk</i>
Wednesday	Gymnastics	3.00pm - 4.00pm	YrR - Yr6	<i>superstarsportsuk@gmail.com</i>
Wednesday	School Football Team	3.00pm - 4.15pm	Yr4 - Yr6	Mrs Marshman via the school office
Wednesday	School Netball Team	3.00pm - 4.15pm	Yr4 - Yr6	Mrs Marshman via the school office
Thursday	French Club	12.30pm - 1.00 pm	Yr5 and Yr6	<i>helen@butterflylanguages.co.uk</i>
Thursday	ComputerXplorers	3.00pm - 4.15pm	Yr1 - Yr6	<i>computerexplorers.co.uk/portsmouth/book/</i>
Thursday	Jamz Street Dance	3.00pm - 4.00pm	YrR - Yr6	<i>jamzdance@live.co.uk</i>
Thursday	Singing Stars	3.00pm - 4.15pm	Yr3 - Yr6	Ms Reid via school office
Friday	Drawing club	3.00pm - 4.15pm	Yr 3 and Yr4 ONLY	<i>FoxArtTeaching@outlook.com</i>
Friday	Dodgeball Club	3.00pm - 5.00pm	Yr2 - Yr6	<i>Dodgeball_club@outlook.com</i>

### Catholic Life - our Parish and our Diocese

#### News from St Margaret Mary Parish:

##### St Patrick's Night Celebration:

**Saturday 21st March 7pm in the Parish Hall.**

An evening of Irish flavoured fun and light entertainment; come along and join in the craic. Tickets are £10 and available to purchase after all Masses. For further ticket details contact Maggie: [maggie@raymontc.plus.com](mailto:maggie@raymontc.plus.com)

ALL PROCEEDS to our Lenten Charity, **BAMENDA**.

##### Parish Stations and Prayer Walk:

**Saturday 28th March 11am-12pm @ Royal Victoria Country Park, Netley Abbey**

This Lent we are planning a short Stations and Prayer walk, followed by a picnic lunch in Royal Victoria Country Park. This walk will be open and accessible to all (pushchairs, scooters, dogs, etc all welcome). Pop the date in your diary and look out for more details in the next few weeks.

**Fr Ansel's Easter Collection** - Please support our Parish Priest by donating via:

1. The collection on Easter Sunday
2. A bank transfer to the parish bank account, please put ref 'Easter Offering'
3. Dona machine at the back of church - option marked "Priest Easter Collection"
4. Use our give as you live page - <https://donate.giveasyoulive.com/fundraising/park-gate-st-margaret-mary-catholic-parish-easter-collection-2026>

#### Diocesan e-news

[Portsmouth Diocese e-News Issue 526](#)



### Laughalots forms

A gentle reminder that all Breakfast and After School club forms need to be returned to the office by Monday 23rd March at 9am.

Please note that some days are over-subscribed so we will allocate spaces on a first come first served basis.

Thank you



## Weekly Certificates

### Headteacher's Awards:

None this week

### Year 6 Exemplary Pupil of the week:

Una-Jane For showing a determination to apply herself wholeheartedly in every subject and to strive for excellence

### St Anthony's Mission Stars:

Preschool	Poppy	For being a kind and caring friend to everyone
Year R	Isabelle	For treating everyone with love, respect and kindness
Year 1	Freya	For making our classroom shine with her smile
Year 2	Emma	For always being a kind, friendly, helpful and considerate role model to all
Year 3	Teddy	For his strong work ethic and ability to always put others first
Year 4	Maisie	For her quiet determination and positive attitude towards her learning
Year 5	Charlie H	For brightening our classroom with his delightful personality and willingness to share his hard work
Year 6	Josh R	For using his God-given gift of resilience, bouncing back from challenges and never giving up

### St Anthony's Awesome Learners:

Preschool	Nathaniel	Year 3	Mia
Year R	Kuba	Year 4	Louie
Year 1	Belle	Year 5	Katherine
Year 2	Aidan	Year 6	Sebby

### Supporting our school library

If you would like to commemorate your child's birthday by contributing to the reading culture within the school, please consider our Amazon [wishlist](#) of titles that we currently don't have in our library but would love to provide the children with. Any books bought from our [wishlist](#) will have an insert added to the front cover, recognising the family and/or child who has purchased it for our school.

Thank you for your continued support!

### Supporting our local food bank

If you are able to help, the following items have been particularly requested:  
Cereals, biscuits, jams, tea, coffee, pasta sauces, tinned vegetables (especially tomatoes and sweetcorn), tinned fruit/puddings, rice, sugar, tinned soup, tinned tuna.

Please place any donations in the boxes in our entrance foyer.

Thank you for your continued support and generosity!



## Map to show the Waypoint Church car park and route to the St Anthony's back gate



### French Club

Learn French the fun way and give your child a head-start at secondary!  
A limited number of spaces have become available, where your child can learn French with conversations, games, role-plays, rhymes and stories with basic grammar.  
Lessons are £6 each.  
For more info contact Helen on:  
07780591789 or [helen@butterflylanguages.co.uk](mailto:helen@butterflylanguages.co.uk)



### Reminders:

**NUT FREE SCHOOL:** A reminder that we are a 'Nut Free School'. Even small traces of nuts can cause severe allergic reactions through ingestion, cross-contamination, or airborne particles. We kindly ask that you **do not** send any food items **containing nuts** or products that **may contain traces of nuts** in your child's lunchbox or as snacks.

**SPARE UNIFORM APPEAL:** We are always on the lookout for spare clean socks, tights and PE joggers (particularly smaller sizes), so if you have anything that your child has out-grown please consider donating this to us. Leave any donations with the school office.

**2nd HAND UNIFORM** Please consider purchasing from the 2nd Hand Uniform Shop to support a circular economy, reduce waste, save money, and help raise funds for the PSA - We currently have lots of lovely items in stock, including Preschool.

Good quality uniform donations are always welcome. Please contact the PSA 2nd hand uniform store via email on: [uniform@saint-anthonysfareham.co.uk](mailto:uniform@saint-anthonysfareham.co.uk)

